



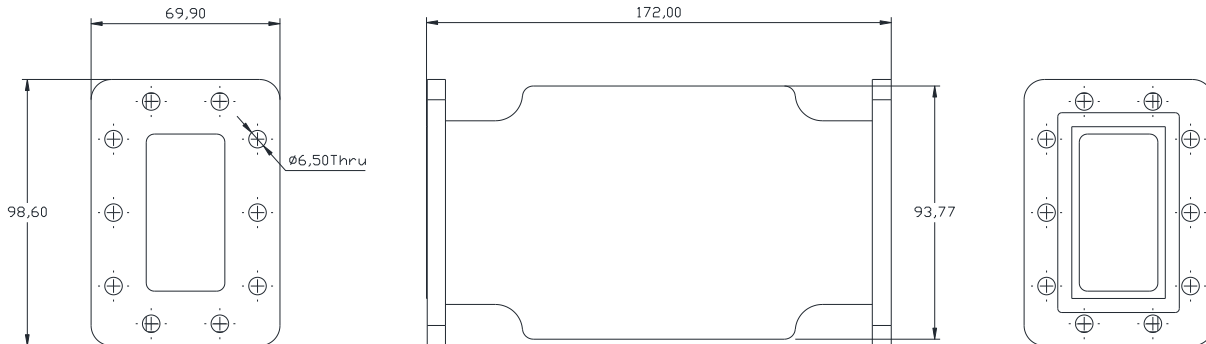
Model Number:
F-WGC1-714067

RF Components

C-Band Waveguide Bandpass Filter

3820 - 4200 MHz

Physical Dimensions ($\pm 0.3\text{mm}$)



Filter

RF Parameters	
F-WGC1-714067	CGCF
Waveguide Size	WG11A / WR229 / R40
Frequency Range (MHz)	3820-4200
Connectors	CPR229F / CPR229G
Insertion Loss (dB max)	1
Return Loss (dB min)	20
Group Delay / Ripple (ns max)	1.45
Rejection	Radar
	≥70 dB @ 3700 MHz ≥60 dB @ 3800 MHz ≥50 dB @ 3803 MHz ≥25 dB @ 4230-4400 MHz
Max RF Power (W)	100

Environmental	
Operating Temperature	-20 °C to +50°C
Location	For Indoor / outdoor use IP 65 rated

Broadcast



Marine Oil & Gas



SNG & VSAT



Satellite Teleport

